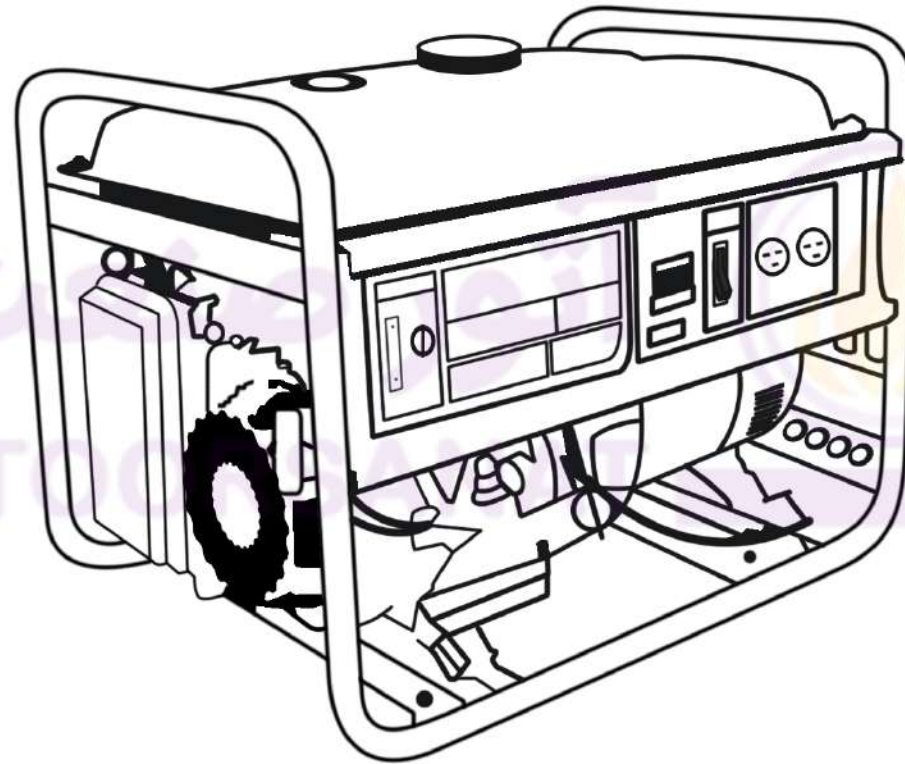


GASOLINE GENERATOR SET SERIES

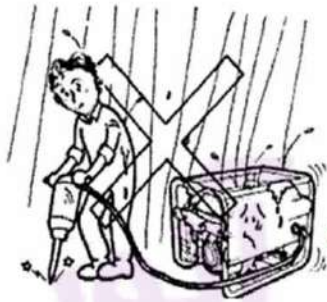


SAFETY

BE CAREFUL!



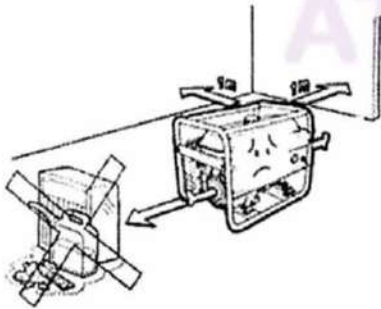
NO USE IN HOUSE!



NO USE IN WET CONDITION



NO CONNECT TO HOUSEHOLD CIRCUIT



KEEP FLAMMABLE MATERIAL AWAY
MORE THAN 1M (3ft)



WHEN REFUELING STOP ENGINE!

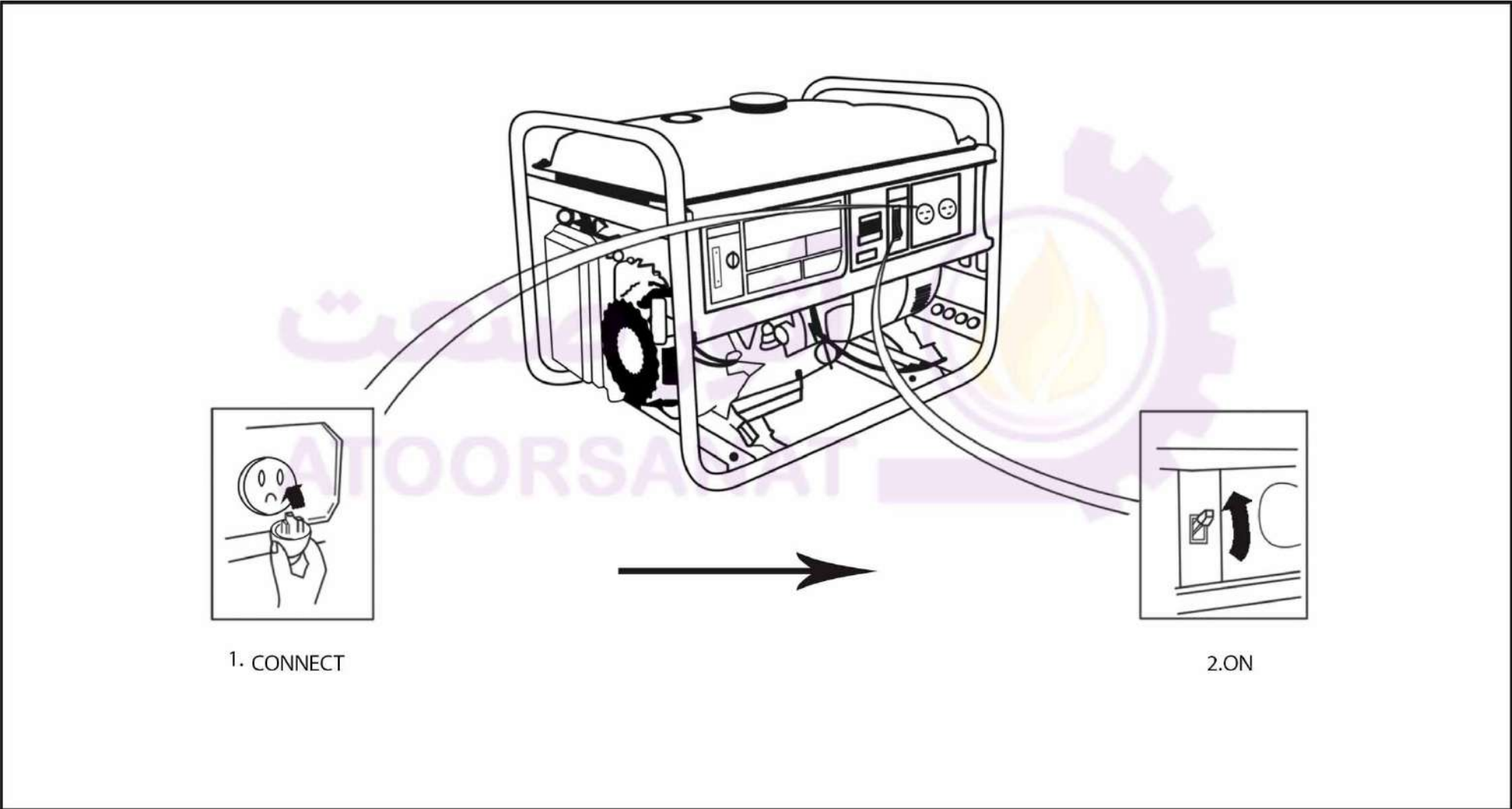


NO SMOKING



DO NOT SPILL!

USE GENERATOR



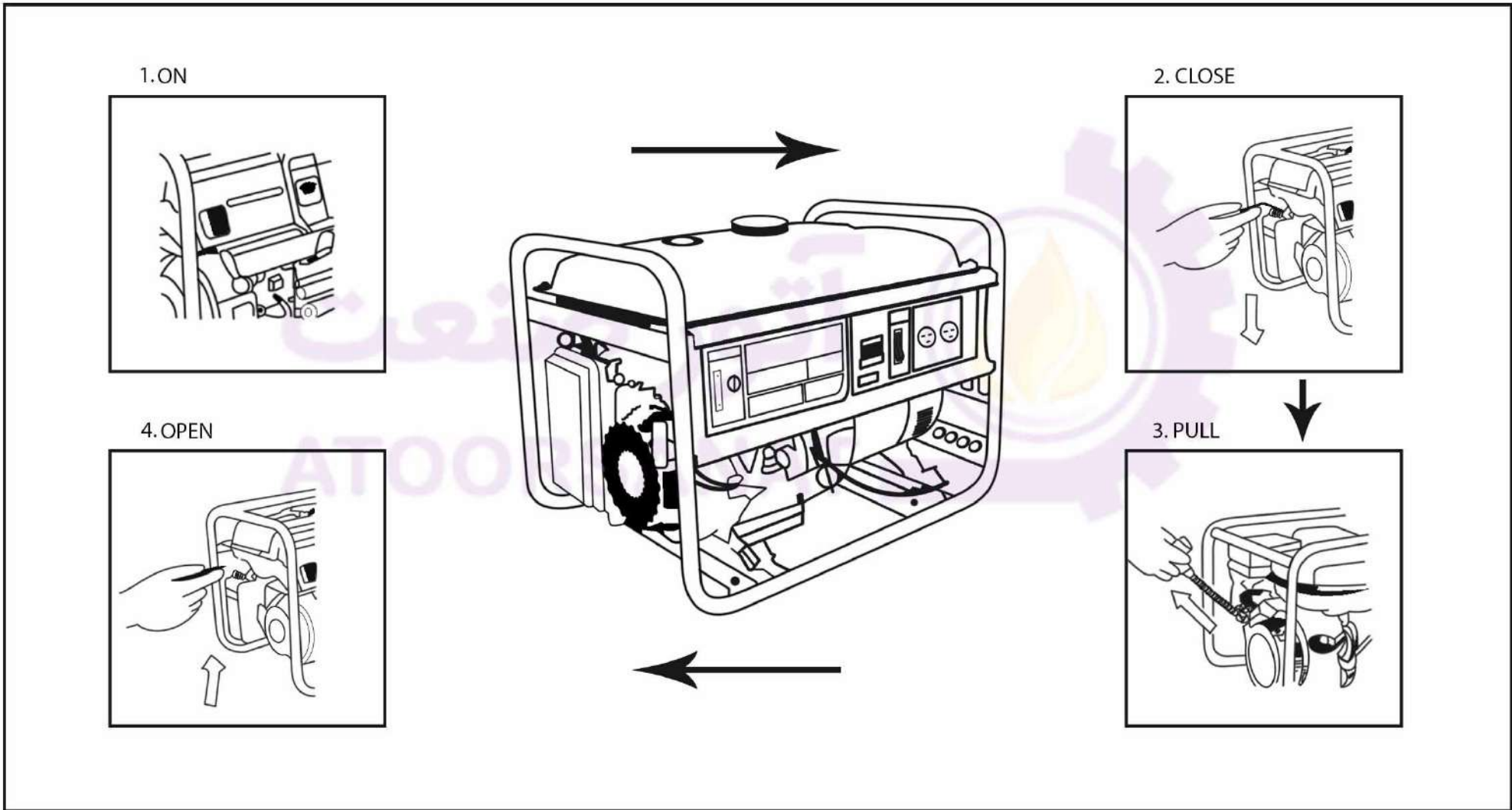
SPECIFICATION

Model Destination		1.5GF(1800)	2GF(2500)
Engine	Model	168F	168F
	Type	Forced air-cooled four-strokes OHV single cylinder	
	Displacement(ml)	163	163
	Maximum Power Output (HP/rpm)	5.5/4000	5.5/4000
	Ignition System	Transistorized magneto	
	Starting System	Recoil and hand-operated	
	Fuel Tank Capacity (L)	15	15
	Fuel Consumption(L/H)	1.0	1.13
	Continuous Operating Hours(H)	16	16
	Engine Oil Capacity(L)	0.6	0.6
	Operating Noise Level at 7m (dB)	63	65
	Generator	AC Frequency(Hz)	50
AC Output Voltage (V)		220	220
Rated AC Output (KVA)		1.5	2/2.1
Maximum AC Output(KVA)		1.7	2.2/2.3
The Whole	Net Weight (kg)	42	45
	Total Length(mm)	590	590
	Total Width(mm)	430	430
	Total Height (mm)	435	435
Standard Features	Big Air Cleaner	●	●
	Big oil Tank	●	●
	Big Muffler	●	●
	Fuel Gauge	●	●
	Voltmeter	●	●
	Automatic Voltage Adjustor	●	●
	Oil Alarm System	●	●
	Circuit Breaker	●	●
	Circuit Protector	■	■
	Storage Battery Bracket	■	■
Chosen Equipment	Four-Wheel Series	Optional	Optional

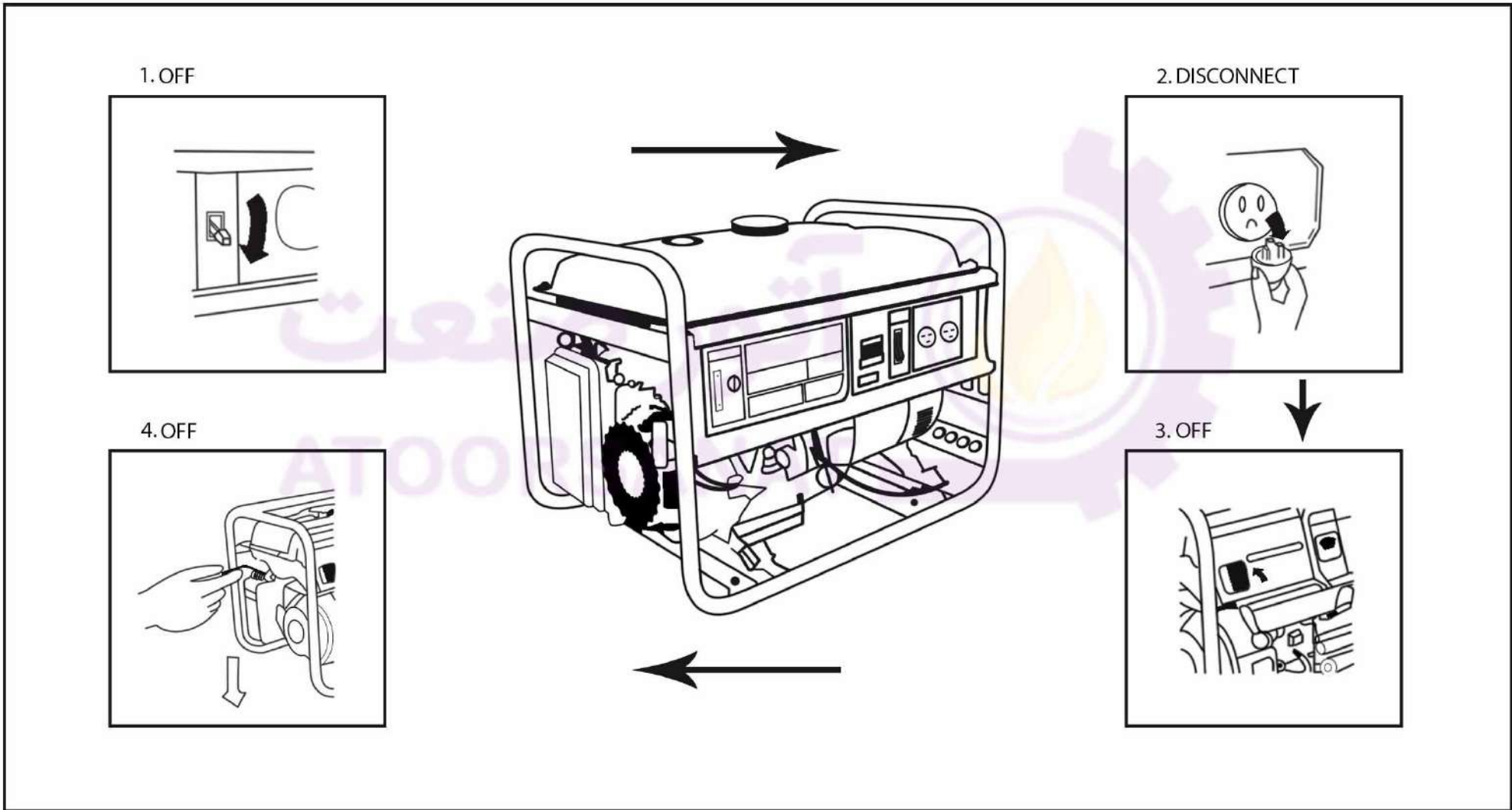
SPECIFICATION

Model Destination		2.5GF(3000)	3 GF(3800)	4GF(6000)	5GF(6500)
Engine	Model	168F-1	173F	182F	188F
	Type	Forced air-cooled four-strokes OHV single cylinder			
	Displacement(ml)	196	242	337	389
	Maximum Power Output (HP/rpm)	6.5/3600	8.0/3600	1.1/3600	13/3600
	Ignition System	Transistorized magneto			
	Starting System	Recoil and hand-operated			
	Fuel Tank Capacity (L)	15	25	25	25
	Fuel Consumption(L/H)	1.36	2.0	2.45	2.7
	Continuous Operating Hours(H)	11	12.5	10	9
	Engine Oil Capacity(L)	0.6	1.1	1.1	1.1
	Operating Noise Level at 7m (dB)	67	69	72	74
Generator	AC Frequency(Hz)	50	50	50	50
	AC Output Voltage (V)	220	220	220	220
	Rated AC Output (KW)	2.5	3	4	5
	Maximum AC Output (KW)	2.8	3.5	4.5	5.5
The Whole	Net Weight(kg)	67	70	80	83
	Total Length(mm)	610	680	680	680
	Total Width(mm)	430	510	510	510
	Total Height (mm)	435	540	540	540
Standard Features	Big Air Cleaner	●	●	●	●
	Big oil Tank	●	●	●	●
	Big Muffler	●	●	●	●
	Fuel Gauge	●	●	●	●
	Voltmeter	●	●	●	●
	Automatic Voltage Adjustor	●	●	●	●
	Oil Alarm System	●	●	●	●
	Circuit Breaker	●	●	●	●
	Circuit Protector	■	■	■	■
	Storage Battery Bracket	■	■	■	■
Chosen Equipment	Four-Wheel Series	Optional	Optional	Optional	Optional

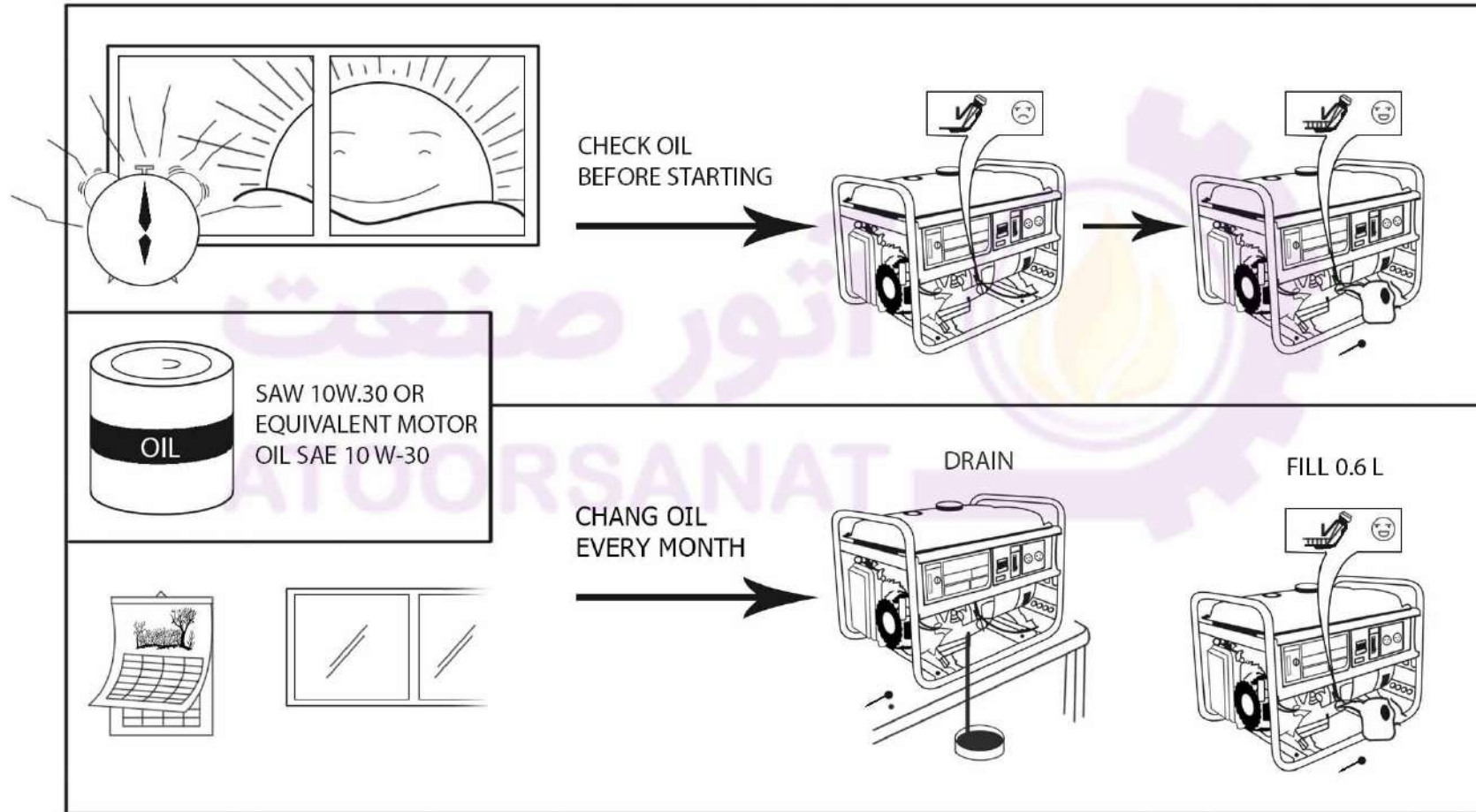
START ENGINE



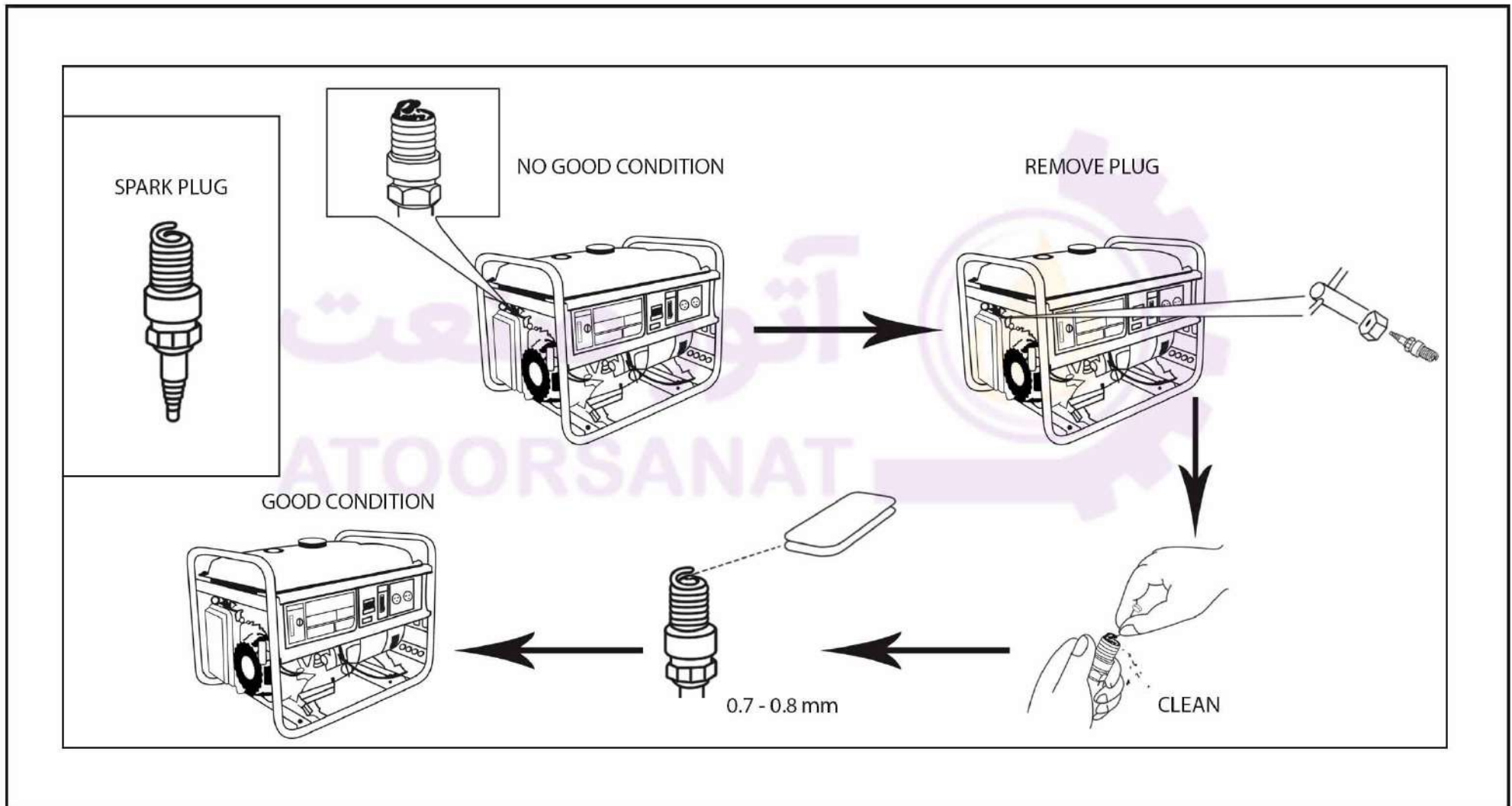
STOP ENGINE



MAINTENANCE



MAINTENANCE



MAINTENANCE

