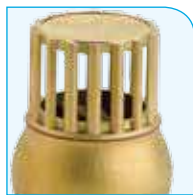


# Picture Index



Pages  
**201 - 210**



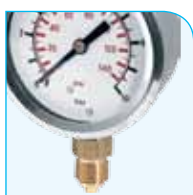
Pages  
**211 - 216**



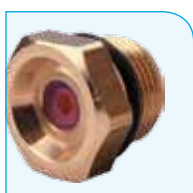
Pages  
**217 - 230**



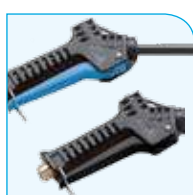
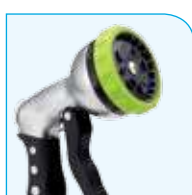
Pages  
**231 - 234**



Pages  
**235 - 236**



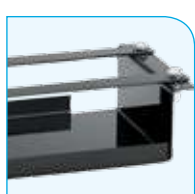
Pages  
**237 - 244**



Pages  
**245 - 250**



Pages  
**251 - 254**



Pages  
**255 - 258**

آتور صنعت

ATOORSANAT



# High Pressure Plunger Pumps



Interpump Pumps	2 - 6
Interpump High Temperature Pumps	7
Interpump Stainless Steel Pumps	8
Interpump Industrial Pumps	9 - 11
Interpump Agricultural Pumps	12
Interpump Hydraulic Driven Pumps	13
Interpump Spares	13
Hypro Industrial Pumps	14
Pratissoli Industrial Pumps	15 - 23
Pratissoli Connection Kits	23 - 24
<b>Pratissoli Accessories</b>	
Unloader Valves	25
Regulating Valves	26
Pulsation Dampeners	26
Pneumatic Valves	27
Safety Relief Valves	28
Filters	29
Gearboxes	30
Pump & Gearbox Assemblies	31
Flexible Couplings & Flanges	32

## Typical applications:

- Hot and cold pressure washers
- Engine driven pressure washers
- Forecourt pressure washers
- Pressure test equipment
- Industrial cleaning products
- Special duty applications

## General technical details:

- Pressures up to 275 Bar
- Flow rates up to 21 Lpm
- Speeds from 1000 to 3400 Rpm
- Stainless steel valve seats
- Nylon valve cages
- Nitrile/fabric water seals
- 100% Ceramic plungers
- Oil bath crankcase lubrication
- Anodised aluminium housings
- Self-priming
- Fluid temperature up to 60°C
- Brass & aluminium manifolds

## 51 Series Triplex - Male Shaft



- Flow rates up to 13 Lpm
- Pressures up to 150 Bar
- 3/8" BSP female inlet
- 1/4" BSP female outlet
- Brass manifold

Part No.	Bar	Lpm	HP	Rpm	Shaft OD	(LxWxH) mm	Kg
W1208	120	8	2.5	1450	24mm	177x175x130	5.2
W1210	120	10	3		24mm	177x175x130	5.2
W1507	150	7	3		24mm	177x175x130	5.2
WW90	90	8	2	2800	24mm	177x175x130	5.2
WW93	90	11	2.5		24mm	177x175x130	5.2
WW94	90	13	3		24mm	177x175x130	5.2
WW95	100	9.5	2.5		24mm	177x175x130	5.2

## 51 Series Triplex - Male Shaft - Unloader Valve with Chemical Injector



- Flow rates up to 13 Lpm
- Pressures up to 150 Bar
- 1/2" BSP female inlet
- 3/8" BSP male outlet
- Brass manifold

Part No.	Bar	Lpm	HP	Rpm	Shaft OD	(LxWxH) mm	Kg
WW90V	90	8	2	2800	24mm	223x175x203	5.7
WW94V	90	13	3		24mm	223x175x203	5.7
WW1508V	150	8	3		24mm	223x175x203	5.7
WW1509V	150	9	3.5		24mm	223x175x203	5.7
WW1510V	150	10	4		24mm	223x175x203	5.7
WW1511V	150	11	4.5		24mm	223x175x203	5.7
WW1513V	150	13	5		24mm	223x175x203	5.7

## 51 Series Triplex - Hollow Shaft for Motor - Unloader Valve with Chemical Injector



- Flow rates up to 9.5 Lpm
- Pressures up to 100 Bar
- 1/2" BSP female inlet
- 3/8" BSP male outlet
- Brass manifold

Part No.	Bar	Lpm	HP	Rpm	Shaft ID	(LxWxH) mm	Kg
WW95BV	100	9.5	2.5	2800	18mm	228x175x209	6

## 51 Series Triplex - Hollow Shaft for Engine - Unloader Valve with Chemical Injector



- Flow rates up to 13 Lpm
- Pressures up to 150 Bar
- 1/2" BSP female inlet
- 3/8" BSP male outlet or 22mm male
- Brass manifold

Part No.	Bar	Lpm	HP	Rpm	Shaft ID	(LxWxH) mm	Kg
WW906CVB	100	8	2.5	3400	3/4"	223x184x203	6
WW907CVB	100	10.6	3		3/4"	223x184x203	6
TT1508CVB	150	8	3		3/4"	223x184x203	6
TT1510CVB	150	10	4		3/4"	223x184x203	6
TT1511CVB	150	11	4		3/4"	223x184x203	6
TT1512CVB	150	12	4.5		3/4"	223x184x203	6
TT1513CVB	150	13	5		3/4"	223x184x203	6

## FE 51 Series - Low Flow Pumps

- Flow rates up to 8 Lpm
- Pressures up to 100 Bar
- 3/8" BSP female inlet
- 1/4" BSP female outlet
- Brass manifold

Part No.	Bar	Lpm	HP	Rpm	Shaft OD	(LxWxH) mm	Kg
FE5101	100	1	0.28	1450	24mm	177x175x130	5.2
FE5102	100	2	0.57		24mm	177x175x130	5.2
FE5104	100	4	1.07		24mm	177x175x130	5.2
FE5106	100	6	1.68		24mm	177x175x130	5.2
FE5108	100	8	2.11		24mm	177x175x130	5.2



**For HXM Misting Regulator Valve see page 128**

## FE 60 Series - Low Flow Pumps

- Flow rates up to 12 Lpm
- Pressures up to 100 Bar
- 1/2" BSP female inlet
- 3/8" BSP female outlet
- Brass manifold

Part No.	Bar	Lpm	HP	Rpm	Shaft OD	(LxWxH) mm	Kg
FE6004	100	4	1.07	1450	24mm	193.5x202.5x125	6.0
FE6006	100	6	1.68		24mm	193.5x202.5x125	6.0
FE6008	100	8	2.11		24mm	193.5x202.5x125	6.0
FE6010	100	9.5	2.47		24mm	193.5x202.5x125	6.0
FE6012	100	12	3.10		24mm	193.5x202.5x125	6.0



**For HXM Misting Regulator Valve see page 128**

## 49 Series Duplex - Male Shaft

- Flow rates up to 11 Lpm
- Pressures up to 100 Bar
- 1/2" BSP female inlet
- 3/8" BSP female outlet
- Nickel aluminium manifold

Part No.	Bar	Lpm	HP	Rpm	Shaft OD	(LxWxH) mm	Kg
W72	70	8	1.5	1450	24mm	227x173x138	5
W73	70	11	2		24mm	227x173x138	5
W72B*	100	8	2		24mm	227x173x138	6
W73B*	100	11	3		24mm	227x173x138	6

\*Brass manifold



## 50 Series Triplex - Male Shaft

- Flow rates up to 13 Lpm
- Pressures up to 140 Bar
- 1/2" BSP female inlet
- 3/8" BSP female outlet
- Brass manifold

Part No.	Bar	Lpm	HP	Rpm	Shaft OD	(LxWxH) mm	Kg
W70*	70	11	2	1450	24mm	238x211x138	6.5
W91*	90	13	3		24mm	238x211x138	6.5
W98	100	11	3		24mm	238x211x138	8.5
W99	100	13	3.3		24mm	238x211x138	8.5
WS137	120	13	4		24mm	238x211x138	8.7
WS149	140	11	4	24mm	238x211x138	8.7	

\*Nickel plated aluminium manifold



## 50 Series Triplex - Male Shaft

- Flow rates up to 16.6 Lpm
- Pressures up to 172 Bar
- 1/2" BSP female inlet
- 3/8" BSP female outlet
- Brass manifold

Part No.	Bar	Lpm	HP	Rpm	Shaft OD	(LxWxH) mm	Kg
WW141	140	11.5	4	2800	24mm	238x211x138	8.5
WW161	160	14	5.5		24mm	238x211x138	8.5
WW935	172	13.2	6	3400	24mm	238x211x138	8.5
WW944	172	16.6	7.5		24mm	238x211x138	8.5



When operating at temperatures above 40°C certain installation conditions must be observed, please contact our sales office for full details

## 44 Series Triplex - Male Shaft



- Flow rates up to 15 Lpm
- Pressures up to 200 Bar
- 1/2" BSP female inlet
- 3/8" BSP female outlet
- Brass manifold

Part No.	Bar	Lpm	HP	Rpm	Shaft OD	(LxWxH) mm	Kg
W112M	100	12	3	1450	24mm	225x221x117	7.7
W130M	130	9.5	3		24mm	225x221x117	7.9
W140M	140	12	4		24mm	225x221x117	7.7
W150M	150	8	3		24mm	225x221x117	7.9
W154M	150	14	5.5		24mm	225x221x117	7.7
W170M	170	9.5	4		24mm	225x221x117	7.9
W200*	200	12	6		24mm	225x221x117	7.7
W204*	200	14	7.3	2800	24mm	225x221x117	7.7
WW156M	150	15	5.5		24mm	225x221x117	7.9
WW209	200	15	7.5		24mm	225x221x117	7.9

\*Nickel plated brass manifold

## 44 Series Triplex - Male Shaft - Unloader Valve with Chemical Injector



- Flow rates up to 14 Lpm
- Pressures up to 150 Bar
- 1/2" BSP female inlet
- 3/8" BSP male outlet
- Brass manifold

Part No.	Bar	Lpm	HP	Rpm	Shaft OD	(LxWxH) mm	Kg
W112MV	100	12	3	1450	24mm	295x221x205	7.9
W140MV	140	12	4		24mm	295x221x205	7.9
W154MV	150	14	5.5		24mm	295x221x205	7.9

## 44 Series Triplex - Hollow Shaft for Electric Motor



- Flow rates up to 14 Lpm
- Pressures up to 200 Bar
- 1/2" BSP female inlet
- 3/8" BSP female outlet
- Brass manifold

Part No.	Bar	Lpm	HP	Rpm	Shaft ID	(LxWxH) mm	Kg
W112B	100	12	3	1450	28mm	228x211x145	7.7
W140B	140	12	4		28mm	228x211x145	7.7
W154B	150	14	5.5		28mm	228x211x145	7.7
W200B*	200	12	6		28mm	228x211x145	7.7
W204B*	200	14	7.3		28mm	228x211x145	7.7

\*Nickel plated brass manifold

## 44 Series Triplex - Hollow Shaft for Electric Motor - Unloader Valve with Chemical Injector



- Flow rates up to 14 Lpm
- Pressures up to 150 Bar
- 1/2" BSP female inlet
- 3/8" BSP male outlet
- Brass manifold

Part No.	Bar	Lpm	HP	Rpm	Shaft ID	(LxWxH) mm	Kg
W112BV	100	12	3	1450	28mm	267x211x219	7.9
W140BV	140	12	4		28mm	267x211x219	7.9
W154BV	150	14	5.5		28mm	267x211x219	7.9

## 44 Series Triplex - Hollow Shaft for Engine



- Flow rates up to 17.4 Lpm
- Pressures up to 250 Bar
- 1/2" BSP female inlet
- 3/8" BSP female outlet
- Brass manifold

Part No.	Bar	Lpm	HP	Rpm	Shaft ID	(LxWxH) mm	Kg
WW961C	172	15	6.5	3400	1"	225x250x164	8.7
WW962C	172	17.4	7.5		1"	225x250x164	8.7
WW965C*	250	15	10		1"	225x250x164	8.7

\*Nickel plated brass manifold

## 47 Series Triplex - Male Shaft

- Flow rates up to 21 Lpm
- Pressures up to 275 Bar
- 1/2" BSP female inlet
- 3/8" BSP female outlet
- Brass manifold

Part No.	Bar	Lpm	HP	Rpm	Shaft OD	(LxWxH) mm	Kg
WS82	80	21	4	1450	24mm	298x224x146	14
WS92	90	18	4		24mm	298x224x146	14
WS101	100	15	4		24mm	298x224x146	14
WS102	100	21	5.5		24mm	321x224x146	14.5
WS132	120	18.7	5.5		24mm	321x234x146	14.5
WS151	150	15	5.5		24mm	321x234x146	14.5
WS162	160	18	7.5		24mm	321x234x146	14.5
WS171	170	13	5.5		24mm	321x234x146	14.5
WS201*	200	15	7.5		24mm	321x234x146	14.5
WS202*	200	21	10		24mm	321x234x146	14.5
WS251*	250	15	10		24mm	316x236x146	14.5
WS252*	250	21	14		24mm	316x236x146	14.5
W928*	275	12	10	24mm	316x236x146	14.5	

\*Nickel plated brass manifold



WS252, Nickel plated manifold

## 47 Series Triplex - Twin Male Shaft

- Flow rates up to 21 Lpm
- Pressures up to 200 Bar
- 1/2" BSP female inlet
- 3/8" BSP female outlet
- Brass manifold

Part No.	Bar	Lpm	HP	Rpm	Shaft OD	(LxWxH) mm	Kg
W151	150	15	5.5	1000	24mm	316x252x140	14.5
W162	160	18	7.5		24mm	316x252x140	14.5
W201*	200	15	7.5		24mm	316x252x140	14.5
WS151AA	150	15	5.5	1450	2 x 24mm	321x270x146	14.5
WS201AA*	200	15	7.5		2 x 24mm	321x270x146	14.5
WS202AA*	200	21	10		2 x 24mm	321x270x146	14.5

\*Nickel plated brass manifold



## 63 Series Triplex - Male Shaft

- Flow rates up to 16 Lpm
- Pressures up to 200 Bar
- 1/2" BSP female inlet
- 3/8" BSP female outlet
- Brass manifold

Part No.	Bar	Lpm	HP	Rpm	Shaft OD	(LxWxH) mm	Kg
EL1411M	140	11	4.0	1450	24mm	213x211x122	8.05
EL1713M	170	13	5.8		24mm	213x211x122	8.05
EL1714M	170	14	6.2		24mm	213x211x122	8.05
EL2007M	200	7	3.7		24mm	213x211x122	8.15
EL2009M	200	9	4.7	2800	24mm	213x211x122	8.15
EH1413M	140	13	4.8		24mm	213x211x122	8.15
EH1416M	140	16	5.8		24mm	213x211x122	8.15
EH2011M	200	11	5.8		24mm	213x211x122	8.15



## 63 Series Triplex - Male Shaft - Unloader Valve with Chemical Injector

- Flow rates up to 16 Lpm
- Pressures up to 200 Bar
- 3/4" BSP male inlet
- 3/8" BSP male outlet
- Brass manifold

Part No.	Bar	Lpm	HP	Rpm	Shaft OD	(LxWxH) mm	Kg
EL1411MV	140	11	4.0	1450	24mm	285x211x207	8.25
EL1713MV	170	13	5.8		24mm	285x211x207	8.25
EL1714MV	170	14	6.2		24mm	285x211x207	8.25
EL2007MV	200	7	3.7		24mm	285x211x207	8.35
EL2009MV	200	9	4.7	2800	24mm	285x211x207	8.35
EH1413MV	140	13	4.8		24mm	285x211x207	8.35
EH1416MV	140	16	5.8		24mm	285x211x207	8.35
EH2011MV	200	11	5.8		24mm	285x211x207	8.35



When operating at temperatures above 40°C certain installation conditions must be observed, please contact our sales office for full details

## 63 Series Triplex - Hollow Shaft for Electric Motor



- Flow rates up to 16 Lpm
- Pressures up to 200 Bar
- 1/2" BSP female inlet
- 3/8" BSP female outlet
- Brass manifold

Part No.	Bar	Lpm	HP	Rpm	Shaft ID	(LxWxH) mm	Kg
EL1411B	140	11	4.0	1450	28mm	219x201x145	8.05
EL1713B	170	13	5.8		28mm	219x201x145	8.05
EL2007B	200	7	3.7		28mm	219x201x145	8.15
EL2009B	200	9	4.7		28mm	219x201x145	8.15
EH1413B	140	13	4.8	2800	28mm	219x201x145	8.15
EH1416B	140	16	5.8		28mm	219x201x145	8.15
EH2011B	200	11	5.8		28mm	219x201x145	8.15

## 63 Series Triplex - Hollow Shaft for Electric Motor - Unloader Valve with Chemical Injector



- Flow rates up to 16 Lpm
- Pressures up to 200 Bar
- 1/2" BSP female inlet
- 3/8" BSP male outlet
- Brass manifold

Part No.	Bar	Lpm	HP	Rpm	Shaft ID	(LxWxH) mm	Kg
EL1411BV	140	11	4.0	1450	28mm	290x201x222	8.25
EL1713BV	170	13	5.8		28mm	290x201x222	8.25
EL2007BV	200	7	3.7		28mm	290x201x222	8.35
EL2009BV	200	9	4.7		28mm	290x201x222	8.35
EH1413BV	140	13	4.8	2800	28mm	290x201x222	8.35
EH1416BV	140	16	5.8		28mm	290x201x222	8.35
EH2011BV	200	11	5.8		28mm	290x201x222	8.35

## 63 Series Triplex - Hollow Shaft for Engine



- Flow rates up to 16 Lpm
- Pressures up to 200 Bar
- 1/2" BSP female inlet
- 3/8" BSP female outlet
- Brass manifold

Part No.	Bar	Lpm	HP	Rpm	Shaft ID	(LxWxH) mm	Kg
UH2008C-34	200	8	4.2	3400	3/4"	213x213x121	8.15
UH2011C-34	200	11	5.8		3/4"	213x213x121	8.15
UH2011C-01	200	11	5.8		1"	213x240x164	8.15
UH2013C-34	200	13	6.8		3/4"	213x213x121	8.15
UH2013C-01	200	13	6.8		1"	213x240x164	8.15
UH2016C-01	200	16	8.3		1"	213x240x164	8.15

## 63 Series Triplex - Hollow Shaft for Engine - Unloader Valve with Chemical Injector



- Flow rates up to 16 Lpm
- Pressures up to 200 Bar
- 1/2" BSP female inlet
- 3/8" BSP male outlet
- Brass manifold

Part No.	Bar	Lpm	HP	Rpm	Shaft ID	(LxWxH) mm	Kg
UH2008CV-34	200	8	4.2	3400	3/4"	285x213x203	8.35
UH2011CV-34	200	11	5.8		3/4"	285x213x203	8.35
UH2011CV-01	200	11	5.8		1"	287x240x231	8.35
UH2013CV-34	200	13	6.8		3/4"	285x213x203	8.35
UH2013CV-01	200	13	6.8		1"	287x240x231	8.35
UH2016CV-01	200	16	8.3		1"	287x240x231	8.35